

Minutes
Maryland Invasive Plant Advisory Committee Meeting
March 13, 2012

Members Present

Mike Hemming	Dennis Robinson
Sylvan Kaufman	Ian Spotts
Kerrie Kyde	John Peter Thompson
Deborah Landau	Kevin Wilsey
Maile Neel	
Jason Phippen	

Members Absent

Carol A. Holko

Meeting opened 9:30 am by Kerrie Kyde

Introductory Comments by Kerrie Kyde:

Minutes were approved from previous meeting in January.

- Election of officers decided from the floor.
Chair: Kerrie Kyde
Vice Chair: Sylvan Kaufman
Secretary: Kevin Wilsey
- Robert's Rules to be adopted. Robert's Rules allow the committee to work within a general agreement to run a meeting informally. Robert's Rules will be put into practice only when there is indecision or lack of consensus among the committee. Whoever is running the meeting must announce that we are running the meeting informally. If someone has an objection they are to bring it up at that time otherwise we will work under consensus.
- Risk assessment protocol to be established and regulations in place by October 1, 2012. The committee will set up the framework. The regulatory language adopting the risk assessment protocol we choose will be established by the MDA Legislative staff. Progress made at each meeting will determine the IPAC meeting schedule and frequency this fiscal year.
- Recognition given to Sylvan for setting up the Chesapeake Network Listserve. For copyrighted and other materials that cannot be posted on a public listserv, do not check the share with Chesapeake Network or other group boxes.
- Recognition given to Deborah and John Peter for setting up the webinar.
- Discussion and comparison of pros and cons with other risk assessment protocols that have already been established. New York and Virginia have species lists similar to one we may apply in Maryland that we can use as a good starting point. Copies of questions from each of the NY-TNC and APHIS protocols were distributed for comparison.

- We are not establishing a decision tree for prioritizing or deciding on-the-ground control action.
- Is the committee to develop a list of both plants that are already established within Maryland and those that are potential invaders in the State? Should the protocol we adopt contain a climate change module for assessment of invaders likely to be present under future conditions?
- The Nursery Industry wants a transparent, objective easily accessible process to run plants of their choosing through the protocol.
- Need to decide ranking protocol with special consideration of species that fall in the middle risk category, not high risk and therefore rejected nor low risk and therefore accepted.
- Compare questions between the APHIS system, which has 20 questions (which are mainly concerned with plants that are coming into the state). New York TNC system (The Nature Conservancy) works mainly with plants which have already been established and the impact they may cause. Virginia used test plots throughout the state to monitor specific plants.
- Dr. Anthony Koop and Dr. Al Tasker, affiliated with APHIS, are willing to participate and assist.
- EDDMapS is an invader tracking system based on Google Earth with a form interface on line that allows you to report sightings and locations of specific invasive species. Relies mainly on volunteer information, which goes on the record immediately as “unverified” until a vetted certified botanical person has verified the record.
- Each committee member is to test three species -- *Perilla frutescens*, *Polygonum cuspidatum* and *Acer platanoides* – in the two risk assessment protocols. You may also pick a species that you do not think is a problem. Use the internet to find as much information as possible to answer the question.
- Other current “weed lists” functional in Maryland include:
 - DNR’s “Do Not Plant List” -- This is an internal policy document that lists species that may not be planted on DNR land or any project they oversee or fund. It has no regulatory authority.
 - MISC’s list of Invasive Species of Concern in Maryland. This list was put together by biologists, based on their best opinions and field observations. It is anecdotal but “educated anecdotal.” It does not have any regulatory authority.
 - MDA’s State Noxious Weed list, which lists regulated species.
- How much of an impact will the structure of the questions we ask influence the ratings?
- The IPAC authorizing legislation requires an annual update of the risk assessment protocol. The protocol and any update of the tiered plant list may be altered at that time including to adopt a climate change module.

- Questions 21, 22, 23 on the APHIS WRA. John Peter Thompson will follow up with Dr. Koop for clarification on whether questions should be Maryland based or remain on a national scale.
- For the time being, for ranking purposes, we will consider the state to be divided into three “zones” -- Coastal Plain, Piedmont, and Mountain. More local zonation may be determined later.
- Regulatory language needs to be established by October 1, 2012.
- List links for information on the plants which are on the test to the listserv to be shared.
- Next meeting is to be held April 10th in the Executive Conference Room, 3rd Floor in Room 303.

Meeting adjourned by Kerrie Kyde 12:00 pm.

Maryland Invasive Plant Advisory Committee
Tuesday, April 10, 2012
Maryland Department of Agriculture
Annapolis, Maryland
MINUTES

Call to order 9:30 am by Kerrie Kyde, Chairperson

- Meeting will be run informally; no objections

Welcome and Introductions

- Members present:

Mike Hemming	Maile Neel	Dennis Robinson
Sylvan Kaufman	Jason Pippen	Ian Spotts
Kerrie Kyde	John Peter Thompson	Kevin Wilsey

Review/Approval of Meeting Minutes

- March 13, 2012 meeting minutes were approved
- Aim to have future meeting minutes available for review/approval within 2 weeks of meeting

Changes to the Agenda

- None

Review Member Experience with 3 Plants in 2 Risk Assessments

- Approximately 2 ½ - 4 hours to complete one risk assessment
- Potential Resources for Completing Assessments:
 - USDA Plant Data Base
 - Google Scholar Search
 - EddMapS
 - *Plant Invaders of the Mid Atlantic Natural Areas* - good resource but has very little research based support
- New York model
 - Easy to use
 - Questions are intuitive
 - Does not have very good documentation for the assessments that have been conducted
 - Model could be used but require better documentation
 - How well does NY handle predicting species not yet established?
 - Can model be easily adapted for Maryland?
- APHIS model
 - Can be a bit confusing and difficult to apply criteria uniformly
 - APHIS questions are non-intuitive
 - Need to see the “comment box” to get further definition of criteria and answers
 - Additional training is needed on APHIS level of uncertainty
 - Appears to be more of a judgment call due to the documentation/information that is available
 - Uncertainty rating does not influence the final score
 - Separates out the impact metric from the invasive risk potential
 - APHIS is not designed to determine impact but rather the risk of impact
 - How well does APHIS handle species that are already established?
 - Nursery industry will be regulated by the APHIS system

- There are benefits of dealing with one system instead of two
 - APHIS will be used by federal government and updated more frequently due to receiving information from all states
 - Why does APHIS want us to use their model?
 - Supports their mission statement of developing a national program
 - Would prefer 1 national system versus multiple regional systems
 - Opportunity to share data with other states
- Must be able to defend the decisions that are made
 - Multiple citations and references must be used if they exist
- Model does not have to be intuitive for the public
 - Results are more important
- Should quantity of assessments already conducted in other systems impact which system we will choose for Maryland?
 - New York assessments may not apply to Maryland

Foundational Research to Support Risk Assessment Process in 2012-13

- Consider hiring a group of professionals to conduct research and complete the assessments; IPAC would make the policy decisions based on these assessments
 - Easier to defend decisions based on thorough review and research by professionals
 - Possible grant funding:
 - National Fish and Wildlife Foundation
 - National Plant Conservation Initiative
 - Committee will explore other possible funding opportunities

APHIS' Offer of Assistance and June RA Workshop

- Dr. Koop has offered support and will provide information and updates
- Weed Risk Assessment Workshop to be held on June 19th – 22nd at APHIS-PPQ Center for Plant Health Science and Technology in Raleigh, North Carolina
 - Kerrie Kyde (and possibly others) are planning on attending

Meeting Dates for 2012

- Next meeting is to be held May 8th.

Next Steps/Assignments

- Assessment protocol is to be identified by October 1, 2012
- Comparison of the models and results is needed
 - Interested in seeing if there are any consistent differences between the models
 - **ACTION ITEM** - Kerrie Kyde will contact Dr. Koop and New York and post spreadsheet of 25 species run through both systems
- Can APHIS model be adapted to evaluate species for their potential in Maryland?
 - Nebraska has adopted the APHIS model
 - **ACTION ITEM** – Kevin Wilsey will contact Nebraska for information on how model was adjusted for their state climate

Meeting adjourned by Kerrie Kyde 12:00 pm.

Maryland Invasive Plant Advisory Committee
Tuesday, May 8, 2012
Maryland Department of Agriculture
Annapolis, Maryland
MINUTES

Call to order 9:35 am by Kerrie Kyde, Chairperson

- Meeting will be run informally; no objections

Welcome and Introductions

- Members present:

Ian Spotts	Deborah Landau	Maile Neel	Darlene Hallet
Kerrie Kyde	Kevin Wilsey	Carol Holko	Dennis Robinson (phone)
Mike Hemming	John Peter Thompson	Jason Pippen	

Review/Approval of Meeting Minutes

- April 12, 2012 meeting minutes were approved

Changes to the Agenda

- None

Review APHIS-TNC assessments of 22 species

- APHIS & TNC rankings are independent from one another
 - APHIS only utilized information from outside the US
 - TNC uses information from both inside and outside the US, but focuses on species that are already present in New York/US
 - APHIS high-end “secondary screening” is similar to TNC low-end “high” ranking
- Questions from both assessments cover the same areas and topics
- John Peter Thompson
 - When TNC answers all questions, the results from both assessments are similar
 - APHIS handles unknown questions with an uncertainty ranking
 - TNC allows unanswered questions and adjusts weighting of final score
 - APHIS model is used at the national level to determine which plants can be imported for the nursery industry
 - APHIS is aware that assessment questions are not intuitive and will be asking IPAC for input and suggestions
- Ian Spotts
 - APHIS will work with us to make future modifications
 - APHIS model has potential to become a national model
 - IPAC should help facilitate the national model by using it at the local level
- Kerrie Kyde
 - Marilyn Jordan (TNC) encouraged IPAC to use the APHIS model
 - APHIS model wasn’t fully developed when TNC created their model
- Maile Neel
 - APHIS model ranked 7 species higher than TNC
 - TNC model ranked 9 species higher than APHIS
 - 5 rankings were the same in both models
 - APHIS assessment is more robust
 - Concerns about making APHIS model Maryland specific

- Dennis Robinson
 - Prefers APHIS model but adjustments need to be made to be more intuitive, with less reliance on the “explanatory notes” for each question
- **Motion to accept APHIS model as basis for IPAC ranking system** (Deborah Landau)
- **Motion to accept APHIS model with following amendment** (Maile Neel)
 - *Adopt APHIS WRA for use in Maryland by IPAC with use of regional data or literature and refined questions to make more intuitive*
- **Motion seconded** (Kevin Wilsey)
- **Motion passed**

APHIS’ June WRA Workshop Update

- APHIS WRA workshop in Raleigh on June 19 – 22
- John Peter Thompson, Sylvan Kaufman, and Kerrie Kyde will be attending; NB: Post-meeting update: Carol Holko will attend the first day of the workshop
- Over 30 attendees are expected with some international representation
- Canada is looking at adopting the APHIS model
- Workshop covers basics of using the tool, the GIS component, etc.
- Kerrie Kyde would like to use workshop at an opportunity to present any questions we have
 - IPAC will review APHIS assessment and compile list of questions
- Carol Holko will contact colleague from Nebraska to discuss how the APHIS model has worked for them
- Jason Phippen
 - Need to ensure that model can be modified for local influence
 - Model needs to be objective, transparent & defensible
- Ian Spotts
 - What set of questions can be tailored to be Maryland specific?
- GIS component can be modified for Maryland use
- IPAC has two purposes for the model – keep new invasive species out and eliminate the spread of invasive species that are already present

Foundational Research to Support Risk Assessment Process in 2012-13

- Now that model has been adopted, what needs to occur to make it formal for regulations?
 - Carol Holko will ask MDA legal counsel to attend June 12th meeting
- Completing the assessments will be a large task
 - IPAC members would not be able to complete this on their own by October 2013
- TNC hired consultants to run assessments at a rate of \$300 per species
 - TNC group met 80 times (4 hours each meeting) to review the assessments
- Ways to perform assessments
 - Can APHIS devote staff?
 - No
 - Would they be able to if funding was provided?
 - Apply for National Fish and Wildlife Administration grant
 - Deadline is approaching soon
 - Pre-proposals due on May 18th
 - Would require matching funding of approximately \$1,000 per agency

- Graduate Students
 - Not preferred
 - Assessments should be conducted by professionals
 - Work would not count towards their thesis
 - Longevity and turnover is a concern
- There are benefits from having a small select group run assessments versus the whole committee
- Carol Holko
 - IPAC may not be allowed under regulations to hire an outside agency or enter into an agreement
 - Carol will discuss with the Secretary and legal
- How many species will be assessed and what is approximate time commitment?
 - Kerrie Kyde and John Peter Thompson estimate approximately 200 species will be assessed with 4-5 hours per assessment
 - APHIS indicated each assessment took 8-16 hours
- Ian Spotts
 - How will IPAC decide which species to assess?
 - Can we adopt an existing list as a starting point for which assessments to run?
- Carol Holko
 - Next step is to determine how to categorize scores after running the assessments
 - Run tests on both ends of the spectrum to start to set limits
 - Check with scores from existing APHIS assessments
 - Will check if regulations require tier limits be determined by October 2012 deadline
- Kerrie Kyde & Deborah Landau
 - It is risky to set tier limits before running the assessments
 - Assessments should be run by IPAC since APHIS did not include US data
- Maile Neel
 - It would be more objective to set tier limits prior to running the assessments
 - Even without US data, probability values will still be useful
- John Peter Thompson
 - Uncertainty value also needs to be factored

Meeting Dates for 2012

- Next meeting is to be held June 12th.

Next Steps/Assignments

- APHIS' WRA Workshop
 - **ACTION ITEM** – Review APHIS assessment and compile list of questions by June 12th meeting for presentation at the workshop
- Assessment Process
 - Carol Holko will discuss regulatory process with Secretary and MDA legal counsel
 - Do tier limits have to be set by October 2012 deadline?
 - MDA legal counsel will attend June 12th meeting
 - **ACTION ITEM** – Brainstorm ideas for how to run assessments, funding mechanisms, and whether volunteers could be used

IPAC Meeting Minutes

May 8, 2012

Page 4

- Kerrie Kyde will ask APHIS if assessment information is available in a database and send information to IPAC members
- **ACTION ITEM** – Review APHIS assessments (probability rankings and uncertainty) to determine if tier limits can be set

Meeting adjourned by Kerrie Kyde 12:00 pm.

Maryland Invasive Plant Advisory Committee
Tuesday, June 12, 2012
Maryland Department of Agriculture
Annapolis, Maryland
MINUTES

Call to order 9:35 am by Kerrie Kyde, Chairperson

- Meeting will be run informally; no objections

Welcome and Introductions

- Members present:

Jason Phippen	Carol Holko	John Peter Thompson	Mike Hemming
Maile Neel	Ian Spotts	Kevin Wilsey	Sylvan Kaufman
Kerrie Kyde	Deborah Landau (phone)		

Review/Approval of Meeting Minutes

- May 8, 2012 meeting minutes were approved

Changes to the Agenda

- None

Discussion of Member Reviews of Assessments of 24 APHIS and DNR Listed Species

- Kerrie Kyde
 - Agrees with the rankings of approximately half of the APHIS assessments
 - Rankings could change depending on Maryland versus national focus
 - Need a clear process with a consistent approach
 - IPAC shouldn't focus on the APHIS categories but should focus more on the probability scores with some modification for Maryland specific results and uncertainty values
- Maile Neel
 - Majority of discrepancies were species APHIS considered 'major' invaders but Kerrie considered to be 'minor'
 - Wisteria is the only 'major' invader that APHIS ranked as a 'minor' invader
 - Cut-off for Tier 1 and 2 need to be determined prior to running assessments
- Carol Holko
 - Probability rankings may not correspond to how we want to classify
 - There is a natural split around the 90% major invader probability ranking
 - Need to identify where that line is and consider that the division between Tier 1 and Tier 2
 - Need to consider determining the cut-off for Tier 1 and 2 prior to running assessments to be more objective (Kerrie Kyde)
 - Regulations require IPAC to use a scientific tool
 - Numbers and rankings will be used in some scientific way, but we need to know more about the numbers before making a decision
- Kevin Wilsey
 - Probability percentages do not appear to be the only factor in APHIS determining the 'major', 'minor', or 'non' invader classifications
- Ian Spotts
 - If a species ranks as a 'major' invader, it also has to be a 'minor' invader
 - Probability rankings are based on a single score out of 100; the probability scores for major and minor invader are independent which is why a major invader is not also classified as a minor invader in the model (Sylvan Kaufman)

- Why can't we use the pre-existing lists such as DNR Do Not Plant List?
 - DNR List is not a regulation; it is a policy for DNR lands (Kerrie Kyde)
- Sylvan Kaufman
 - Need to run a few more 'minor' and 'non' invaders prior to determining cut-off for Tier 1 and 2
 - An 'evaluate further' list could consider economic impact to the nursery trade
 - Economic importance is not an objective consideration (John Peter Thompson)
 - Are there sales records for plants that might be banned? (Maile Neel)
 - Nurseries can put together estimates on impact of species being banned (Kerrie Kyde)
 - Impact of single species may not be great, but combined impact of many species could be a death sentence (Mike Hemming)
- John Peter Thompson
 - How will IPAC handle assessments with high uncertainty?
- Deborah Landau
 - Concerned that Tier 1 could be exceptionally large
 - What would we consider large? (Maile Neel)
 - Need to have a process for modifying cut-off for Tier 1 and 2 as more information becomes available
 - Cut-off should not be modified based on how many species fall in either tier (Kerrie Kyde)
 - Large Tier 1 list means it will be harder to enforce
 - Short list means it will be harder to eradicate the others (Maile Neel)

Modifications to Wording of Assessment Protocol Questions

- Maile Neel
 - What will be modified to make assessments Maryland specific?
 - Clarified that GIS component is not directly to the establishment score but helps to answer some questions
- Jason Phippen
 - Assessment questions will become clearer the more we use it
 - We don't want to skew or change the system
 - We can provide suggestions to APHIS but we wouldn't be making the changes ourselves (Carol Holko)
 - We can't expect that questions will be intuitive for everyone
 - We just need to be able to explain it (Kevin Wilsey)
 - Maybe create a 'cheat sheet' to help explain the questions (Sylvan Kaufman)

Assessment Database

- IFAS database
 - Housed at University of Florida and run by Karen Brown
 - Annotated bibliography
 - URLs...not actual documents
 - Mostly aquatic species
 - Kerrie Kyde is looking into price for hosting annotations that IPAC sends to IFAS
- Possibility of housing this information on Bugwood?
 - Carol Holko
 - Permanent home for data will be MDA website
 - Links can be provided to other sites

- Hiring consultants to run assessments and develop database
 - Carol Holko
 - Regulations allow for hiring of a consultant
 - MDA does not have the funding to do this, though
 - Sylvan Kaufman
 - Are there are grant opportunities for posting a searchable database?
 - Posting just the pdf's would be great, too
- National Agricultural Library (NAL)
 - John Peter Thompson
 - NAL is interested in hosting but would require funding
 - Funding level depends on the level of work required
- Maile Neel suggested 'End Note' as an option for IPAC keeping a bibliographic database

Nebraska

- Carol Holko
 - Nebraska is using the APHIS WRA as policy; it is not regulatory yet

Translation of WRA Adoption to Regulatory Language

- Carol Holko will attempt to write regulations with Craig Nielson, MDA Assistant Attorney General
- Public comment period is required
- Craig Nielson
 - Attorney General's office sees the legislative deadlines as directive and not as mandatory
 - Cut-off for Tier 1 and 2 needs to be determined for first regulation
 - 'Severe' and 'substantial' harm do not need to be defined
 - The tool will define these by the rankings
- Carol Holko will look at other state's regulations to see if there is language IPAC can use

University of Maryland Herbarium (Maile Neel)

- Database of invasive species locations from the herbarium collection is being populated
- Database will be searchable and can populate other databases once digitized
 - Will be added to Global Biodiversity Information Facility (GBIF), EddMaps, etc.

Meeting Dates for 2012

- Next meeting is to be held July 10th.

Next Steps/Assignments

- Assessments of 'minor' and 'non' invaders
 - **ACTION ITEM** – Sylvan Kaufman and Mike Hemming will develop a suggested list and assign to IPAC members
- APHIS WRA Workshop
 - **ACTION ITEM** – Participants provide report at next meeting
- Regulatory Language
 - Carol Holko and Craig Nielson will begin developing language

Meeting adjourned by Carol Holko at 12:05 pm.

Maryland Invasive Plant Advisory Committee
Tuesday, July 10, 2012
Maryland Department of Agriculture
Annapolis, Maryland
MINUTES

Call to order 9:35 am by Kerrie Kyde, Chairperson

- Meeting will be run informally; no objections

Welcome and Introductions

- Members present:
Carol Holko Kerrie Kyde Maile Neel John Peter Thompson
Sylvan Kaufman Deborah Landau Ian Spotts Kevin Wilsey

Review/Approval of Meeting Minutes

- June 12, 2012 meeting minutes were approved

Changes to the Agenda

- None

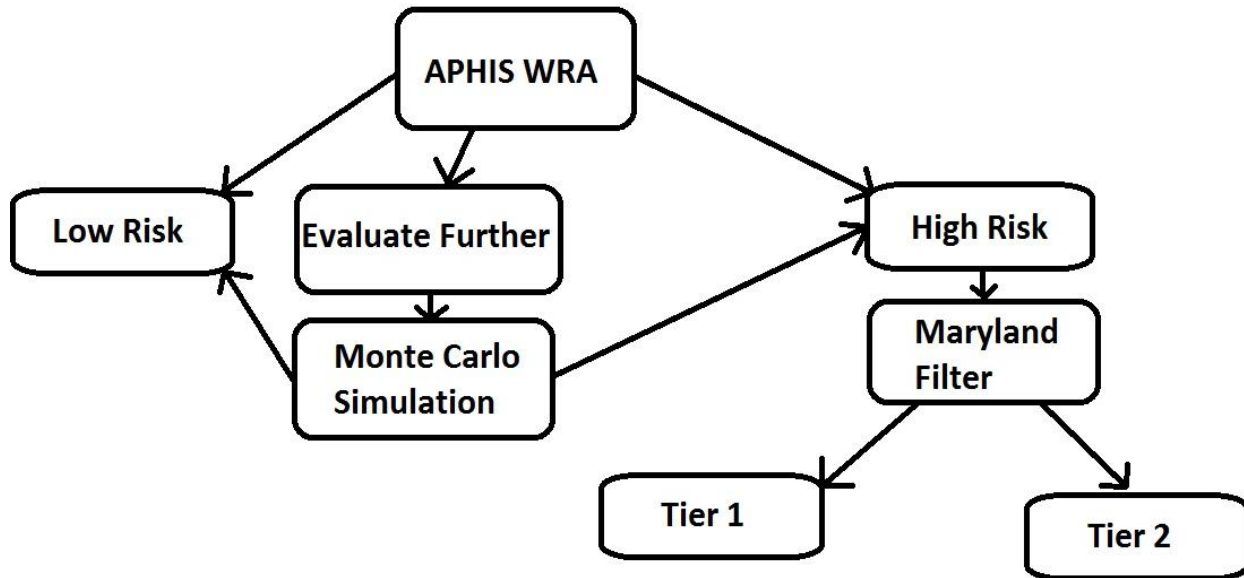
Report from APHIS Workshop Attendees

- Workshop attended by Carol Holko (1-day), Sylvan Kaufman, Kerrie Kyde, and John Peter Thompson.
- Approximately 30 attendees from various states and countries
- Training booklet including a copy of PowerPoint slides and exercises is available if IPAC members would like to review.
- Workshop covered the review/assessment process, evaluating resources, critiquing assessments, and performing assessments
- APHIS has again offered to assist IPAC when running the assessments
- Sylvan Kaufman
 - Workshop was well run and answered many of IPAC's questions and concerns
- Carol Holko
 - Workshop provided an opportunity to meet and discuss assessments with other states, including Nebraska and Virginia.
 - Possibility for sharing resources, coordinating assessments, and seeking funding opportunities
 - If using APHIS WRA, every state does not have to do an assessment
 - Assessments can be shared and data used by any other state
 - John Peter Thompson – need to ensure that thorough review/feedback loop is built into the coordinated assessment process
- Kerrie Kyde
 - Workshop provided a better handle on “uncertainty” and how to assign a value

Discussion of Issues Raised by Workshop

- The Workshop attendees reached a consensus that the APHIS lines for High Risk vs. Low Risk are adequate for Maryland
- Does a ranking of “High Risk” automatically put a species in Tier 1?
 - There is a need to run high risk species through a secondary filter to determine Tier 1 or Tier 2 status
- Maryland Filter

- Decision tree used in addition to the APHIS WRA to evaluate high risk species and rank them as Tier 1 or Tier 2.
 - Species that rank as “Evaluate Further” in the WRA model will be run through the Monte Carlo simulation, assigned a rank of high risk or low risk, and then evaluated with Maryland Filter



- Looks at elements not covered in the APHIS WRA
 - Kerrie Kyde - Many elements were part of the original APHIS design but were removed from the model because they were not strong predictors of invasiveness
- Filter would be a ‘political screen’ used to make policy decisions – is not scientific
- Draft filter presented by Sylvan Kaufman included factors for:
 - Distribution in Maryland
 - Economic Value to the Nursery Industry
 - Feasibility of Control
- Kerrie Kyde
 - Would like to see impact to biodiversity/endangered species included in filter.
 - Sylvan Kaufman
 - This would be ‘double-counting’ since it is part of the WRA model, but it might be ok to include in Maryland Filter if we want to emphasize this area
 - John Peter Thompson
 - If done correctly, assessments in the WRA should pick up on all local, endangered ecosystems
 - Consensus reached to evaluate species for impact to Maryland ecosystems or if impact is limited to specific areas of the country
- Maile Neel
 - ‘Potential’ distribution and ‘current’ distribution should be evaluated separately
- Kevin Wilsey
 - Cost of control for state agencies can be significant and maybe should be factored equally with economic value to nursery industry
- John Peter Thompson

- How will we quantify cost and economic value?
 - Maile Neel – Sales per year?
 - Carol Holko – nursery industry won't have this number
 - Is it fair to ask the nursery and landscape industry to develop a metric for this?
 - Kerrie Kyde will discuss with Jason Phippen and Mike Hemming
 - Carol Holko
 - IPAC needs to determine what high/low distribution, high/low economic value, etc. actually mean
 - This information needs to be in the regulations for October
 - Where to begin assessments?
 - Kerrie Kyde
 - Discussions have largely focused on ornamentals so far
 - Assessments take a substantial amount of time
 - There is no legislative requirement on the number of assessments
 - May be beneficial to start with a small number and build from there
 - APHIS recommends starting with non-controversial species
 - Sylvan Kaufman
 - Need to develop an initial list of species
 - Carol Holko
 - IPAC should avoid species that are regulated under other state laws (e.g. multiflora rose)
 - Maile Neel
 - Some species are not in the nursery trade and would not be relevant to this law
 - Consensus to start with the list Sylvan compiled:

<i>Imperata cylindrica</i> (Cogongrass)	<i>Lythrum salicaria</i> (Purple Loosestrife)	<i>Cytisus scoparius</i> (Scotch Broom)	<i>Oplismenus hirtellus</i> subsp. <i>undulatifolius</i> (Wavy Leaf Basketgrass)	<i>Elaeagnus umbellata</i> (Autumn Olive)
<i>Triadica sebifera</i> (Chinese Tallow)	<i>Lonicera maackii</i> (Amur honeysuckle)	<i>Berberis thunbergii</i> (Japanese barberry)	<i>Albizia julibrissin</i> (Mimosa or silktree)	<i>Akebia quinata</i> (Chocolate vine)
<i>Euonymus alatus</i> (Burningbush or winged euonymus)	<i>Ligustrum obtusifolium</i> (Border privet)	<i>Ligustrum sinense</i> (Chinese privet)	<i>Wisteria sinensis</i> (Chinese wisteria)	<i>Nandina domestica</i> (Nandina or sacred bamboo)
<i>Dioscorea oppositifolia</i> (Chinese yam or cinnamon vine)	<i>Pyrus calleryana</i> (Callery pear)	<i>Aralia elata</i> (Japanese angelica tree)	<i>Phyllostachys aurea</i> (Golden bamboo)	<i>Iris pseudacorus</i> (Paleyellow iris)
<i>Paulownia tomentosa</i> (Princesstree)	<i>Rhodotypos scandens</i> (Makino jetbead)	<i>Lonicera japonica</i> (Japanese honeysuckle)	<i>Ligustrum vulgare</i> (European privet)	<i>Ranunculus ficaria</i> (Fig buttercup)
<i>Phellodendron amurense</i> (Amur corktree)	<i>Euonymus fortunei</i> (Winter creeper)	<i>Humulus japonicus</i> (Japanese hop)		

- How to handle cultivars?
 - IPAC will assess straight species and include as much cultivar-specific information as possible
 - John Peter Thompson
 - Cultivars should have their own assessment

- Kerrie Kyde
 - IPAC can't adopt multiple policies for a given species and its cultivars
 - Sterility is not proven
- Carol Holko
 - Include cultivar concerns in the Maryland Filter
 - Kerrie Kyde – if the species ranks as a Tier 1, 'sterile' cultivars should at least be Tier 2
 - Deborah Landau – Nurseries can still sell Tier 2 species as long as they provide signage
 - Process would be consistent with how other states are handling this issue
- Query nursery industry for likely candidates
 - Kerrie Kyde
 - Not in favor, as it needlessly raises concern of imminent ban
 - Maile Neel
 - Wouldn't hurt to ask for opinion and could be good politics
 - Carol Holko
 - Why would they want any species assessed?
 - Would be a nice 'goodwill' gesture
 - Sylvan Kaufman
 - Maybe they have new species they are considering bringing in?
 - Carol Holko – this would be assessed by APHIS prior to allowing it in the country
 - APHIS got a lot of flack over their initial list of assessments
 - John Peter Thompson – this was largely due to APHIS error in classifying many commonly traded species as not in the nursery industry
 - Kerrie Kyde will discuss with Jason Phippen and Mike Hemming about sharing initial assessment list and soliciting input from landscape and nursery industry

Draft Regulatory Language

- Carol Holko
 - IPAC will adopt the APHIS WRA by reference
 - Legal wants a copy of it
 - Carol will provide a copy of the Koop paper to the legislators with the proposed regulations
 - Will be discussing how to word regulations in case APHIS makes changes to the WRA
 - How will we build the "Maryland Filter" into the regulations?
 - Need some sort of guidance language for the factors and how to answer questions
- Process for Exceptions to the Statute
 - Will IPAC help the Secretary when evaluating exception requests?
 - Could be a large number of requests
 - Will evaluate as they come in and revise policies if needed
 - Carol Holko
 - Would like to see some requirements for what information would be included in the requests.
 - May be able to handle exceptions as a policy rather than including in the regulations.
 - How much detail needs to go in the regulations?
 - Will consult with legal and provide update at next meeting
 - Kerrie Kyde

- Should IPAC consider blanket waivers for State agencies when performing control/removal operations?
- Check with agencies who will be doing any control/removal operations and see what seems feasible for exception requests and requirements
- Deborah Landau
 - Maybe there should be a chain of custody requirement for disposal?
 - Carol Holko
 - IPAC can try our best, but won't catch everything
 - Need to make it easy to comply with
 - What about storm cleanup, etc.?
 - Carol Holko – MDA will work with local governments, agencies, etc. when these situations arise

Assessment Process

- Software Needs
 - APHIS Monte Carlo simulation is run on “@Risk” software program
 - Costs approximately \$1500
 - Tony Koop (APHIS) and Jacob Barney (Virginia Tech) have offered to run the simulations for IPAC to avoid having to buy software
 - APHIS is looking into cost effective alternatives to “@Risk”
- Members willing to complete assessments
 - Ian Spotts
 - Can we coordinate with other states and review their assessments?
 - Maile Neel
 - What are prospects of getting funding from National Plant Board?
 - Carol Holko will discuss possibility of coordinated assessments with the National Plant Board.
- Funding for outside help
 - Carol Holko will discuss funding possibilities with the National Plant Board
 - If available, funding would not come until next year at the earliest
 - John Peter Thompson
 - IPM grants?
 - Sylvan Kaufman
 - Cooperative weed management area requests?
- Sharing data
 - Kerrie Kyde
 - Jake Barney (Virginia Tech) uses Mendeley
 - Bibliographic database
 - Similar to End Note
 - Free to use up to a certain memory size
 - Small cost per month if limit is exceeded
 - Shares information to a closed group
 - Report formatting can't be modified but there are over 100 templates to choose from
 - Share Point
 - Data tracking/sharing software
 - Not the same as Mendeley
 - Requires a site design and data manager

- Access to Literature through National Agricultural Library or University of Maryland
 - Maile Neel
 - Submitted request for some IPAC members to have access to library through the UMD system
 - Does not include the National Agricultural Library but UMD has access to most of the same databases
 - John Peter Thompson
 - NAL does not have off-site licenses
 - NAL is considering request to make Dr. Koop's library available to public

Meeting Dates for 2012

- Next meeting is to be held August 14th.

Next Steps/Assignments

- Funding Opportunities and Coordinated Assessments
 - **ACTION ITEM** – Carol Holko to discuss funding possibilities and coordinating assessments with National Plant Board'
- Maryland Filter
 - **ACTION ITEM** – Sylvan Kaufman and Maile Neel will work to revise Maryland Filter for next meeting
 - **ACTION ITEM** – Jason Phippen and Mike Hemming to solicit input from nursery and landscape industry on how to measure economic value
- Initial List of Species for Assessment
 - Consider how to prioritize species for assessment
 - **ACTION ITEM** – Jason Phippen and Mike Hemming to share initial list of species and solicit input from landscape and nursery industry
- Draft Regulatory Language
 - **ACTION ITEM** – Carol Holko will provide draft copy of regulatory language at next meeting
- Data Sharing
 - **ACTION ITEM** – John Peter Thompson will look into Mendeley for IPAC's needs and provide a demonstration at the next meeting

Meeting adjourned by Kerrie Kyde at 12:00 pm.

Maryland Invasive Plant Advisory Committee
Tuesday, August 14, 2012
Maryland Department of Agriculture
Annapolis, Maryland
MINUTES

Call to order 9:35 am by Kerrie Kyde, Chairperson

- Meeting will be run informally; no objections

Welcome and Introductions

- Members present:

Carol Holko	Kerrie Kyde	Kevin Wilsey	Mike Hemming
John Peter Thompson	Deborah Landau	Sylvan Kaufman	Jason Phippen
Dennis Robinson	Maile Neel	Ian Spotts	Jacob Robinson (guest)

Review/Approval of Meeting Minutes

- July 10, 2012 meeting minutes were approved

Changes to the Agenda

- John Peter Thompson – discuss internet and out-of-state sales of plant material

Draft Regulatory Language (Carol Holko)

- Language will be added to the existing Plant Pest Control regulations
- Mostly restates what is written in the bill/law
- Dr. Koop's paper will be incorporated by reference
- Need to list MD Filter criteria when finalized
 - How the filter will be used is a policy decision and does not have to be included in regulations
 - Sylvan Kaufman - Do the criteria have to be an exact list from the MD filter?
 - Carol Holko – Yes. Try to get them as close as possible to the finalized language.
- Need to develop exception approval procedures for disposal, research, etc.
 - Maile Neel – Can we require out-of-state nurseries to take back prohibited material?
 - Carol Holko
 - MDA could assist with this and issue order for nurseries to take back material, but MDA does not have any regulatory authority outside of Maryland. Arrangement would probably have to be worked out between the buyer and vendor.
 - John Peter Thompson
 - A distinction would have to be made between if the buyer ordered it accidentally or if the vendor shipped it accidentally.
 - Kerrie Kyde
 - Does condemnation/seizure language exist in any other regulations? Could we refer to it?
 - Carol Holko
 - These regulations will repeat language from other regulations regarding disposal procedures (send back, destroy, etc.). We will need to add requirement that buyer submits in writing how they will dispose of plant.
 - Deborah Landau
 - Can we specify that the plant material is disposed in a manner so that it cannot propagate?

- Suggested language – “Destroy in a manner approved by the Secretary so that all plant parts become unviable.”
- Carol Holko
 - Nursery should still tell the Secretary how it is disposed.
 - Would prefer that MDA inspectors give instructions on how to dispose.
- John Peter Thompson
 - What about burning permits?
 - Carol Holko
 - MDA can help in securing
- Kerrie Kyde
 - Do regulations need to require that Secretary is informed when plants have been destroyed or disposed?
 - Carol Holko
 - May be best to handle this through policy and forms.
- Deborah Landau
 - Do we need to add time requirement to adhere to Tier 2 signage regulations?
 - Probably not because nurseries won't leave plant material around very long if it can't be sold.
- Exception Approval process
 - Exceptions for disposal are only required if physically removing plants and disposing off-site.
 - Leaving plant material on-site is not prohibited
 - Require the request be submitted in writing
 - Kerrie Kyde
 - Could this be done on MDA website?
 - Carol Holko – No, MDA is not prepared for this.
 - Does ‘in writing’ prohibit electronic submittal?
 - Request the following information:
 - Name
 - Business Name
 - Address
 - Phone
 - Email
 - Plant Broker/Dealer License Number Plant (full botanical name) with cultivar, if applicable
 - Location of Plant
 - Activity
 - Method for safeguarding against propagule dispersal
 - Term/Timeframe
 - John Peter Thompson
 - Would this apply to Federal government?
 - Carol Holko – No, MDA has no authority on Federal land.
 - Kerrie Kyde
 - How specific does the plan have to be?
 - Sylvan Kaufman
 - Secretary can always ask for clarification or additional information

- Carol Holko
 - Approval will be on a case by case basis
 - Need to consider blanket permits for groups/organizations
 - John Peter Thompson
 - Can we issue a blanket permit for State/county/municipal entities?
 - Kerrie Kyde
 - Maybe blanket permits for government entities, but not for private groups
 - Asking for term/timeframe information will allow for ‘blanket’ approvals for longer time periods
- Kerrie Kyde
 - Does disposal location need to be specified?
 - Carol Holko – We can add to form or request clarification if not given
- Carol Holko will work with MDA legal department to update draft language

Out-of-State and Internet Sales

- John Peter Thompson
 - Internet sales of invasive plant material is increasing
 - Many are using this as a way to bypass regulations
- Carol Holko
 - MDA jurisdiction stops at the state line but can impose regulations if plant material will be sold in Maryland
 - What is the volume of internet sales?
 - John Peter Thompson
 - There is really no metric at this time, but work is being done with USPS, UPS, etc. to come up with estimates.
- Deborah Landau
 - IPAC should assume that regulations apply to all sales, including internet, even if we can’t enforce at this moment.
- Are internet sites such as EBay considered a ‘retail outlet’? How would signage requirements be addressed?
 - Dennis Robinson
 - These probably could be considered a ‘retail outlet’, but regulations were really geared at brick and mortar type establishments.
 - Carol Holko
 - Address this next year when determining the signage requirements
- Kerrie Kyde
 - Do we need to specify internet sales in the regulations?
 - Carol Holko
 - IPAC needs to look at the intent of the Bill and rework if needed.

Maryland Filter

- 2nd draft presented by Sylvan Kaufman and Maile Neel
 - Language added regarding threat to threatened/endangered species or ecosystems
 - Removed ‘value to industry’
 - Need to consider this more and possibly add back in

- How would you measure this?
- Mike Hemming
 - Compared initial list of species of concern with EddMaps to determine infestation levels and value to industry
 - Some species are widespread and have a high dollar value to nursery industry
 - Need to look at dollar volume or percentage of sales to determine economic value
 - Will have to contact other nurseries to get a better handle
- Kerrie Kyde
 - Nursery industry is very important to Maryland
 - Want to be able to ease burden before phasing out plant material
 - Allow for a more generous phase-in for economically important species
- Sylvan Kaufman/Maile Neel
 - Position of 'economic value' in the Maryland Filter can have a big impact on how it is weighted
 - Would a 'phase-in' period answer the concerns of industry?
 - Jason Phippen
 - Phasing-in will still effect the market
 - Very little Tier 1 plants are grown in Maryland – mostly imported to state
 - Contractors probably won't use any Tier 1 or Tier 2 plants even if regulations are phased-in
 - Carol Holko
 - Is there anything we can do to lessen the impacts?
 - John Peter Thompson
 - Suggests contacting Massachusetts to see what impacts their regulations have had.
 - Mike Hemming
 - Crops have a shelf life whether in the ground or in containers.
 - Should be able to determine a finite phase-in period for each Tier 1 species
 - Tier 2 is probably the biggest concern
- Carol Holko
 - Do we need to consider a species current distribution and not just the potential distribution?
 - It is not a good use of our time to ban species that we have little hope of controlling.
 - Maile Neel
 - If this is going to objective, we can't avoid species because they are already widespread.
 - We shouldn't let things that are widely distributed off the hook.
 - Jason Phippen
 - The point is to stop distribution from here on regardless of whether it is here or not.
 - Sylvan Kaufman
 - Is it truly a negligible effect if you keep adding plants to the environment and increasing propagule pressure?
 - Hopes that Tier 2 listing will slow infestations but won't work as fast as a Tier 1 ban.
 - Mike Hemming
 - Many nurseries will voluntarily stop selling Tier 2 plants and some customers will stop buying
 - Tier 2 label will have an impact.
 - Kerrie Kyde

- There are diminishing returns to banning plants that already have a wide distribution to the extent that we can limit further impacts to narrowly distributed species.
- John Peter Thompson
 - By taking this approach and factoring in current distribution, a Tier 1 listing effectively becomes an early detection/rapid response system

National Plant Board (Carol Holko)

- Tony Koop presented at the last meeting
 - Will publish a list of species that have been assessed and what species are in the hopper
- Pennsylvania, Virginia, Montana, Nebraska, and Oregon are interested in pursuing Farm Bill funding for running assessments
- Kerrie Kyde
 - How will data be shared?
 - Carol Holko
 - APHIS could post a list and coordinate data sharing.

Initial Species List

- Fallopia japonica (Japanese Knotweed) will be added to the list

Use of Mendeley

- Easy to use online citation library
- Mendeley.com has an introductory video
- Sylvan Kaufman will create a private group and invite members

Meeting Dates for 2012

- Next meeting is to be held September 11th. Meeting frequency will be reviewed at this meeting.

Next Steps/Assignments

- Draft Regulatory Language
 - **ACTION ITEM** – Carol Holko to work with MDA legal department to update draft regulations
- Maryland Filter
 - **ACTION ITEM** – Sylvan Kaufman and Maile Neel will update and present at next meeting
- Use of Mendeley
 - **ACTION ITEM** – Sylvan Kaufman will investigate and create private group for IPAC

Meeting adjourned by Kerrie Kyde at 12:00 pm.

Maryland Invasive Plant Advisory Committee
Tuesday, September 11, 2012
Maryland Department of Agriculture
Annapolis, Maryland
MINUTES

Call to order 9:35 am by Kerrie Kyde, Chairperson

- Meeting will be run informally; no objections

Welcome and Introductions

- Members present:

Kevin Wilsey	Sylvan Kaufmann	Maile Neel	Ian Spotts
Jason Phippen	Deborah Landau	Carol Holko	Kerrie Kyde

Review/Approval of Meeting Minutes

- August 14, 2012 meeting minutes were approved with amendments

Changes to the Agenda

- Kerrie Kyde – Public Notice Requirements

Draft Regulatory Language (Carol Holko)

- Regulations will restate much of the language that is in the law
- Will be listed under Title 15 – Department of Agriculture, Subtitle 06 – Plant Pest Control, Chapter 04 – Regulation of Invasive Plants
- .01 Scope
 - Summarizes IPAC’s directives
 - Scope will be revised when list of Tier 1 and 2 species is developed
 - Kerrie Kyde/Deborah Landau – Do not like the phrase “...to determine the harm”
 - Carol Holko – Will remove
 - Carol Holko – revise to state “...including an approval procedure for activities involving ~~invasive~~ regulated plant species...”
- .02 Definitions
 - Terms defined are identical to what is in the law
- .03 Risk Assessment Protocol for Invasive Plants
 - Consider removing the word “rank” since the assessment will identify species with a high potential to be invasive but the Maryland Filter will ultimately rank them as Tier 1 or 2.
 - References Dr. Koop’s paper
 - Copies of the paper have to be available to the public if referenced in regulations
 - Carol Holko will look into copyright issues
 - Legislative committee will distribute to various libraries throughout the State
 - 16 copies will be placed in available libraries for public review as required by the Joint Committee on Administrative, Executive and Legislative Review (AELR)
 - Will use the print publication date on 2012 rather than the online 2011 publication date
 - Sylvan Kaufman
 - What changes were made to the paper since it was published?
 - Do we use the original or modified spreadsheets when running the assessments? The scoring might have changed but the factors have remained the same. Do we have to use the original version even if there are only minor changes?

- Kerrie Kyde - Could we substitute “factors and scoring” with “science based weed risk assessment protocol”?
 - Carol Holko will discuss this further with Dr. Koop.
 - Ian Spotts
 - Is this saying that APHIS will be performing the assessments?
 - John Peter Thompson – Regardless of who actually performs the assessment, IPAC is responsible for the results
 - Kerrie Kyde
 - Do we need to restate how the WRA considers “harm”? This is covered in the definitions of Tier 1 and Tier 2.
 - Carol Holko – will remove and see what the MDA legal team thinks
 - The Maryland Filter language is a place holder until the Filter is finalized.
 - Carol Holko
 - Change first sentence to “Factors relating to ~~the invasive plant’s distribution,~~ special Maryland circumstances including:” and then include the factors as a list
 - Is geographical potential covered in Dr. Koop’s paper?
 - Kerrie Kyde
 - Yes, there is a series of questions that predict potential distribution and overlay it on the US map.
 - IPAC needs to define “wide” and “narrow” distribution
 - Sylvan Kaufman
 - ES 21 – 23 in the WRA covers cold hardiness zones, Koppen-Geiger climate classes, and precipitation bands. The Maryland Filter will factor in potential distribution and should cover Carol’s concern over evaluating species not yet in Maryland.
 - Kerrie Kyde
 - Do the Maryland Filter factors need to be defined?
 - Carol Holko – no, just list the factors once they’re finalized.
 - .04 Tier 1 Approval for activities prohibited under the law
 - Kerrie Kyde
 - How closely defined does location have to be?
 - Carol Holko
 - Change to “specific location”, but handle the rest in the form. We do not need to be too specific in the regulations.
 - Should we ask for “source” location and “final” location?
 - Consider tailoring the forms for each regulated activity. Gives opportunity to be more specific.
 - Location of the tier 1 plant, (#7) proposed activity will include its ultimate destination
 - Carol Holko
 - Should the Secretary be allowed to revoke or revise the approval for any reason? If approval itself is less than perfect, need a way for the Secretary to take it back, and not just in case of violation
 - Will discuss this further with Craig and MDA legal.
- .05 Administrative Orders by the Secretary
 - Kevin Wilsey / Kerrie Kyde
 - Could we put all the Tier 1 requirements together?
 - Jason Phippen

- Should we require the return of material to the original supplier? We don't want to allow them to sell it to someone else.
- Regulations should not always call for the destruction of materials and allow for return in case the material is fine but a mistake was made by the supplier
 - Secretary will still have the option to call for the destruction of material
- Right of entry
 - Does the Plant Dealers License come in to play with inspections and right of entry?
 - Carol Holko will discuss this with MDA legal
- Kerrie Kyde
 - Do the regulations need to say anything about fees for MDA disposal? Does a distinction need to be made between fees charged for prohibited plant disposal and the penalties and fines applicable under the law? Are they the same?
 - Jason Phippen – Would the fee be imposed for each plant?
 - Carol Holko – Yes, law states that the civil penalty is for each violation and each plant is a violation is for each individual plant
- Ian Spotts
 - Does “propagating” cover homeowners who are caring for Tier 1 plants in their yard?
 - No, propagating is the active reproduction with the intent for sale and distribution
 - Carol Holko – this can be handled with enforcement issues
 - John Peter Thompson – there is a distinction between propagation and cultivation
 - Sylvan Kaufman – probably won't be enforcing this on homeowners so this won't be an issue
- Carol Holko will be soliciting input on “impact to the industry” questions prior to submitting the regulations

Draft Process/Forms for Exceptions to the Law (Carol Holko)

- Kerrie Kyde
 - Will IPAC develop the forms or will this be handled by MDA's legal department?
 - Carol Holko – This is not prescribed in the regulations
 - Sylvan Kaufman – Do we need to decide on this and develop the forms now?
 - Carol Holko – No, forms do not need to be developed until the list of Tier 1 plants is developed
 - Will the forms be completed and submitted on-line?
 - Carol Holko – Possibly. MDA has new IT staff that will look into if this could be handled on MDA website.

Maryland Filter (Sylvan Kaufman and Maile Neel)

- Latest draft is tentatively approved with the following factors:
 - Is the plant a sterile cultivar or used for root stock only?
 - What is its potential distribution in Maryland?
 - What is its current distribution in Maryland?
 - Does it threaten threatened or endangered species or ecosystems?
 - How feasible is control?
- Kerrie Kyde
 - A smaller subcommittee should be formed to discuss the filter in more detail (Sylvan Kaufman, John Peter Thompson, Maile Neel, and Kerrie Kyde)

- Sylvan Kaufman
 - Subcommittee will meet in the coming weeks to discuss the filter and submit proposed definitions to IPAC for review at the next meeting

Data Sharing

- Mendeley is not free if the group has more than 3 members
- SharePoint is another option, but it is not bibliographic
- Sylvan Kaufman
 - We could store documents on the IPAC listserv
 - Kerrie Kyde – Create a folder with all references for each species
- John Peter Thompson
 - Need to pick a citation style at some point down the road
- IPAC will continue to explore options. Carol will set up a single email address that we can all use and log onto to share documents: IPAC@maryland.gov

Initial Assessments

- Kerrie Kyde
 - Decision on receiving Farm Bill funding will not come for at least 1 year
 - Could each IPAC member assess 1 species?
 - Deborah Landau - Would these assessments be considered official?
 - Kerrie Kyde – Yes, but they would be reviewed by the entire group first
- Sylvan Kaufman
 - Thought that a smaller subset of the group would be conducting the assessments
 - Kerrie Kyde – Will not be granted DNR time sufficient to commit to this effort
- Deborah Landau
 - Need to explore more funding sources to hire people who could devote more time to completing the assessments
- Carol Holko
 - Would prefer to wait and continue to research funding sources before making a decision
 - Maybe there is the possibility of using an APHIS intern?
 - Need to develop estimates for the cost per species for performing the assessments
 - Sylvan Kaufman – We have the estimated number of hours per species for the assessments. Consult with APHIS on the wages for interns to develop total cost estimate.
 - Will discuss estimated cost for running initial species list with Tony Koop.
- Maile Neel
 - It is unreasonable to think that IPAC members would have time to perform the assessments
- Carol Holko
 - Once regulations are completed, IPAC can focus on funding sources
- Kerrie Kyde
 - IPAC members should keep eyes open for any potential funding sources

Public Notice Requirements

- Kerrie Kyde
 - What is required per the Open Meetings Act?
 - Carol Holko – IPAC is required to post notice 2 weeks prior to meeting.
 - This does not have to be the agenda...just general topics that will be discussed.

- Will post a notice through MDA's public affairs office. If an agenda is available at that time, it will be included.

Meeting Dates for 2012

- Kerrie Kyde
 - IPAC should continue meeting every month until regulations are submitted
 - Carol Holko will look into room availability at MDA through October 2013.

Next Steps/Assignments

- Draft Regulatory Language and Forms
 - **ACTION ITEM** – Carol Holko will send updated draft to IPAC members for review
- Maryland Filter
 - **ACTION ITEM** – Subcommittee will meet to discuss filter and submit proposed definitions to IPAC for review at the next meeting
- Initial Assessments
 - **ACTION ITEM** – Carol Holko will consult with Tony Koop to develop estimated cost for running assessments on the initial species list
- Meeting Dates
 - **ACTION ITEM** – Carol Holko will look into room availability at MDA through October 2013.

Meeting adjourned by Kerrie Kyde at 11:50 am.

Maryland Invasive Plant Advisory Committee
Tuesday, November 13, 2012
Maryland Department of Agriculture
Annapolis, Maryland
DRAFT MINUTES

Call to order 9:55 am by Sylvan Kaufman, Vice Chairperson

- Meeting will be run informally; no objections

Welcome and Introductions

- Members present:
Kevin Wilsey Maile Neel Deborah Landau John Peter Thompson (phone)
Ian Spotts Sylvan Kaufman Carol Holko

Review/Approval of Meeting Minutes

- September 11, 2012 meeting minutes were approved with amendments

Changes to the Agenda

- None

Update on Status of Regulations (Carol Holko)

- Received minor punctuation edits – no comments on content
- Regulations expected to be published in Register on Friday, November 16
- It is possible there will be a press release to alert the public when published in the Register
 - Sylvan Kaufman – Will IPAC members be sent the final copy of press release so they can distribute?
 - Yes, press release will be distributed to IPAC
- The Economic Impact Summary does not need to be prepared until the Tier 1 and Tier 2 lists are developed

Maryland Filter (Sylvan Kaufman)

- Sub-committee met twice to discuss and revise the filter (Maile Neel, John Peter Thompson, Sylvan Kaufman, Kerrie Kyde, Deborah Landau, Wes Knapp [DNR])
 - Re-ordered questions
 - Removed “Current Distribution” and replaced with feasibility of control
 - Could result in more plants being placed in Tier 1
 - Carol Holko - Need to reconsider the replacement of “Current Distribution” with “Feasibility of Control” as this would categorize Callery pear, English ivy, etc. as Tier 1 species
 - Sylvan Kaufman – The filter will also look at economic value and could possibly drop these species to Tier 2
 - Carol Holko – Is it worth the resources to have these species as Tier 1?
 - Kevin Wilsey – The previous drafts of the filter were more of an early detection tool. Eliminating the “Current Distribution” changes the goal of the filter.
 - Sylvan Kaufman – We don’t want to give a pass on these species unless there is an economic importance for the nursery industry
 - Deborah Landau – We also need to consider the economic impact of controlling these species

- Maile Neel – Need to attempt to create objective questions based on biology but also include some subjective questions
- Sylvan Kaufman – Would it be better for these types of species to be Tier 1 and can't be sold or Tier 2 and not require a permit for control?
 - Deborah Landau – if the species is well established, being listed as Tier 2 would be better
 - John Peter Thompson – There are 2 objectives – dealing with what's already here and preventing new invasive species from coming here.
- Carol Holko
 - MDA could do departmental permits that everyone could latch on to for control purposes
 - What would be the impact on ban of English ivy?
 - John Peter Thompson
 - Not sure about English ivy, but Norway maple or Barberry would have substantial impact.
 - Need to prepare a presentation to MNLA and get feedback and see where they stand before going forward
- Need to consider how economic importance will be determined if using as a factor to move plants from Tier 1 to Tier 2
 - Can the nursery industry petition to move plants from Tier 1 to Tier 2?
 - Carol Holko – IPAC needs to do homework on front end when preparing filter and reach out to the nursery industry for comments prior to finalizing draft
- Developed guidance on how to measure answers for questions (handout)
 - Sterility and asexual production are defined by the paper distributed by Kerrie Kyde
 - Carol Holko – Are species guilty until proven innocent?
 - Yes
 - Distribution – 6 physiographic provinces from USGS survey
 - Maile Neel – distribution may not be very subtle. It will be all of nothing for most species
 - Threatened/Endangered Species
 - Carol Holko
 - Consider changing title to “Maryland Filter Question Guidelines”
 - Do the Threatened/Endangered species come from the DNR list?
 - Yes
 - Ian Spotts
 - Are we just looking at plant species or also considering animal species?
 - Consider revising question to “Occurring within a population or habitat of T/E species?”
 - Are we including CITES species of just DNR?
 - We will include CITES in the definition of T/E species
 - Feasibility of Control
 - Suggestion to consider number of natural dispersal vectors
 - Would that be considered in relation to potential spread or feasibility of control?
 - Carol Holko – should we consider adding a biocontrol question?

- Maile Neel – Suggests new language: “Is added propagule pressure from sale increasing potential for persistence and spread?”
 - John Peter Thompson – does propagule pressure mean “from seed”?
 - No
 - Carol Holko – we need to look at communities that have not yet been invaded
 - Maile Neel – need to consider the impact of continual sales on control efforts
 - John Peter Thompson – compare the value of control versus the value to nursery industry and others
 - Sylvan Kaufman will draft a new question and send to group for review

National Plant Board (NPB) and Other Possible Funding Sources for Assessments (Carol Holko)

- There is a lot of interest in weed risk assessments from members of the NPB
- The use of APHIS weed risk assessments will determine what funding options are available
- A survey is being drafted for distribution to NPB members to determine level of interest and willingness to partner
 - Suggestion to replaced “coordinated effort” with “collaborative proposal”
 - Maile Neel – add question regarding total number of species they would like to be evaluated
 - Survey expected to go out in later this week and will give 1 week for response time
- Farm Bill
 - Possible funding opportunities
 - Goal 6 – Enhance mitigation capabilities
 - Goal 3 – Enhance and strengthen pest identification and technology
 - Improve all aspects of early detection resources
 - Goal 5 is mostly about developing apps, conducting seminars, etc. and is probably not appropriate
 - Need to cite one goal in proposal
 - Maile Neel
 - How does this all work?
 - Carol Holko – Anyone can submit a proposal. NPB could submit the proposal with Carol listed as the contact.
 - Does this require matching funds?
 - No, Farm Bill does not require matching funds.
- University of Maryland
 - Looking into coordinating funding assessments through APHIS and the UMD Plant Protection Center
 - Post-doctoral assessor would cost approximately \$90K for one year
 - Possibility to hire a ‘subject matter expert’ and build in travel funds
 - Sylvan Kaufman / John Peter Thompson – Travel would be minor and would only be required to go to Raleigh for GIS and other minor coordination
 - Suggestion that Maile Neel be the point person
- IPM Grant
 - Exploring if there is a fit for this type of work
 - Can we withdraw the grant request if we get Farm Bill funding?
 - Yes

Next Steps/Assignments

- Draft Regulatory Language and Forms
 - **ACTION ITEM** – Carol Holko will send final version and press release when published in Maryland Register
- Maryland Filter
 - **ACTION ITEM** – Sylvan Kaufman will revise questions based on member feedback and send to group for review
- NPB Survey
 - **ACTION ITEM** – Carol Holko will send survey to NPB regarding interest in assessments
- University of Maryland
 - **ACTION ITEM** – Carol Holko will contact Karen Raine regarding UMD cooperation for funding assessments
- IPM Grant Proposal
 - **ACTION ITEM** – Carol Holko will see if this is appropriate for funding the assessments

Meeting adjourned by Sylvan Kaufman at 11:40 am.